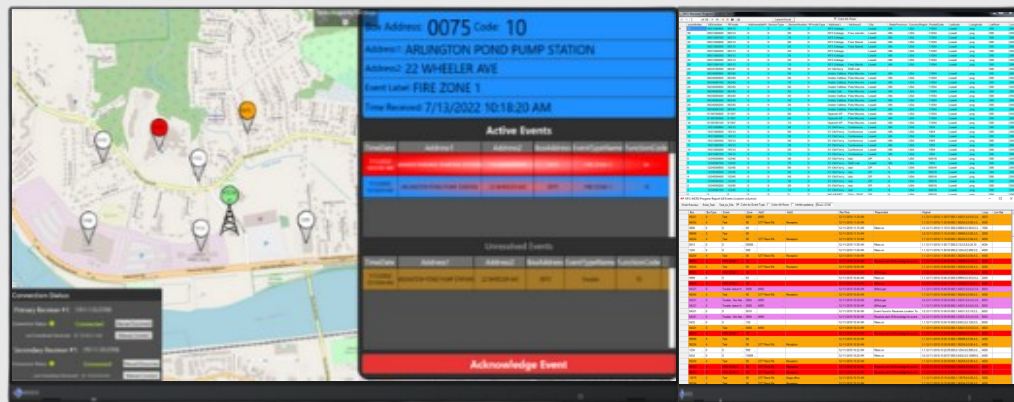




Kingfisher Company, inc.

ADVANCED TECHNOLOGY FOR YOUR EVOLVING LIFE SAFETY NEEDS



IT'S ALL ABOUT BEING CONNECTED!



WORLD LEADER IN EMERGENCY COMMUNICATIONS SINCE 1964

Kingfisher's reputation for unparalleled customer service, high-end technical developments in radio fire, security, medical reporting systems, as well as computer-aided dispatch software has earned the trust of clients around the world.

For educational facilities, industrial sites, military bases and municipalities, there are plenty of challenges. Providing the best detection system does not have to be one of them.

## STATE-OF-THE-ART AND COST-EFFECTIVE TECHNOLOGY

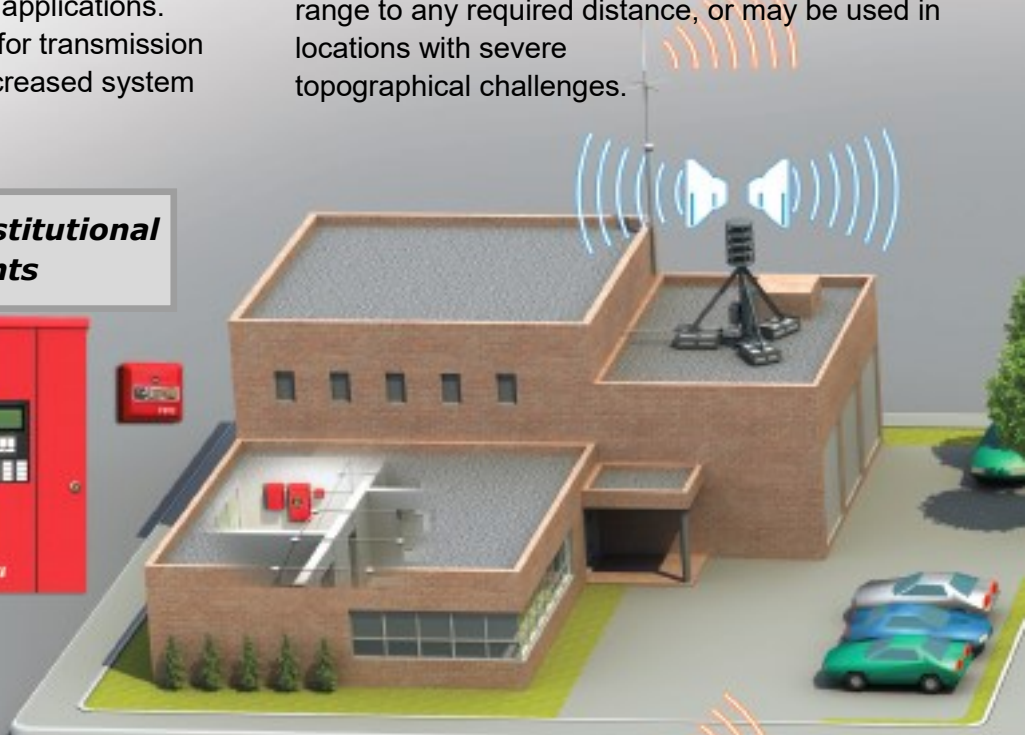
### Faster Transmission Times

KCi leading-edge communications systems rapidly transmit signals, saving critical seconds during emergencies in the most diverse conditions. The receiving station can be engineered for AM (or FM-FSK) capabilities and is designed for radio fire alarm, emergency and critical process applications. Radio transmitters have the capability for transmission of redundant (dual) frequencies for increased system survivability.

### Radio Transmission for Notification Systems

Our receivers and processors receive and decode transmitted signals from up to 15 miles (line of sight) without the need of a repeater. KCi manufactures a complete line of repeaters, which, can extend the range to any required distance, or may be used in locations with severe topographical challenges.

#### **Commercial / Institutional Environments**



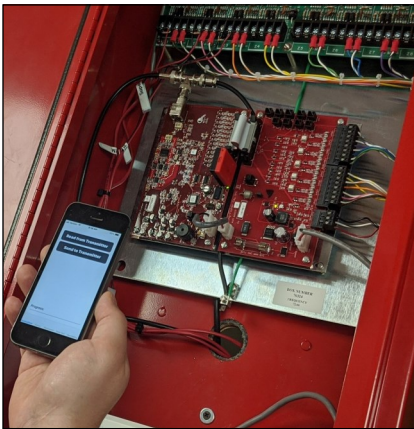
#### **Industrial / Military Environments**





## PRODUCT OFFERING

KCi is a leader in critical protection systems monitoring and radio reporting. A KCi system includes receivers/processors, conventional and addressable fire alarm control panels, radio alarm transmission, interfaces, evacuation devices, Mass Notification Systems (MNS), antennas, battery chargers, and rechargeable batteries.



Cordless interface programmer is available on Apple and Android app stores



### Receivers

We designed our receivers for monitoring and annunciation of virtual any type of KCi remote alarm transmitter or device. Our innovative receiver offers full redundancy in a single compact enclosure.

### Transmitters

Our radio alarm transmitters are capable of transmitting fire, police, medical aid, maintenance and a variety of specific or customer defined emergencies to a 911 Dispatch Center, Emergency Management or Security Control Center. Our transmitters are compatible with UL Listed alarm control panels.

### Fire Control Panels

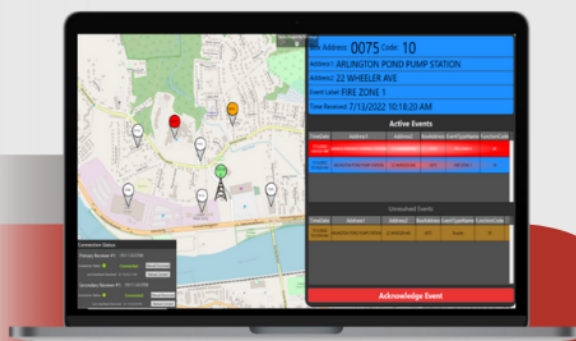
Our Industrial Fire Alarm Control Panel are modular, self-contained systems capable of operating in a wide range of temperatures (-40° F) and designed for detecting the operation of any approved signaling and initiating device.

### Cordless Interface

Our Cordless Interface allows the user to program a ELT Transmitter wirelessly. After a short installation, the only steps needed to program are to plug in the interface device and run the application.

### IOT Transmitters

The IOT expandable IOT transmitter is a self-contained Auxiliary Signaling Device. The IOT transmitter communicates automatically over Ethernet, Wifi, and cellular with automatic media path and carrier selection.



- Increased dispatcher efficiency handling events
- Streamlined intelligent command & control center
- Simplified alarm and event processing
- Robust and fully customizable reporting suite

REQUEST A GUI 2.0 DEMO TODAY



## WHAT SETS KINGFISHER APART?

---

### Our Products

KCi offers a complete line of products to cover all your life safety needs. Our quality is evident in all of our products, and innovative products are constantly being developed by our team of Engineers. Our compatibility with other Fire Alarm Control panels allows you to install your KCi products to transmit alarms from any FACP and know you are protected.

### State-of-the-art and cost-effective technology

We base our leading-edge communications systems on software defined radio transmission technology. Radio-based systems tend to be more economical than traditional hard-wired systems.

### Reputation and Experience

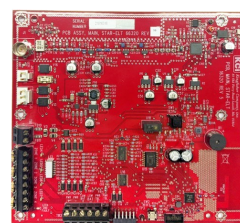
A staff that represents hundreds of years of combined experience within the fire and life safety industry.

### Service

Factory-trained technicians verify the operation and functionality of your equipment. Certified technicians perform extensive system tests, that provide the benefit of an extended protective warranty.

### Customer Training

Kingfisher technicians and engineers answer technical questions and explain the functionality of various components. This environment offers time for visiting technicians to gain experience with the panels, receive answers to questions, and learn the latest in fire alarm, security, and codes. We offer this 4-day, 30 hour training course at our headquarters located in Lowell, Massachusetts, US



### Industry Reputation

Established in 1964, with a focus on monitoring, detection, and reporting, we have grown to be one of the leading manufacturers of communication systems based upon radio transmission technology. Our advanced technology and reputation developed as our customers demanded flexible solutions to meet a variety of life safety needs. Our customer base includes commercial, industrial, institutional, and the military. Simply put, as technology advances, we are there with new product and the reputation to support your requirements.

### Unparalleled Technical/Field Services

Kingfisher Company offers ongoing maintenance contracts to ensure your systems stay at peak performance and reliability. Our on-site support options range from periodic maintenance and scheduled testing to the option of contracting for full-time on-site assistance from factory trained KCi representatives.

---



*Kingfisher Company, inc.*

## Global Presence

KCi customer base includes commercial, industrial, institutional, and military customers throughout the world.

KCi systems are currently in service in the continental United States, Alaska, Hawaii, Japan, Korea, and Guam. KCi systems are also located in diverse locations such as Antarctica, the Middle East, and the Persian Gulf area.



**81 Old Ferry Road, Lowell, MA 01854**

**KCi Sales 978-596-0214**

**Phone (Toll Free) 888-687-5324 (US)**

**Fax 978-596-0217**

**Email [sales@kfc.com](mailto:sales@kfc.com)**

