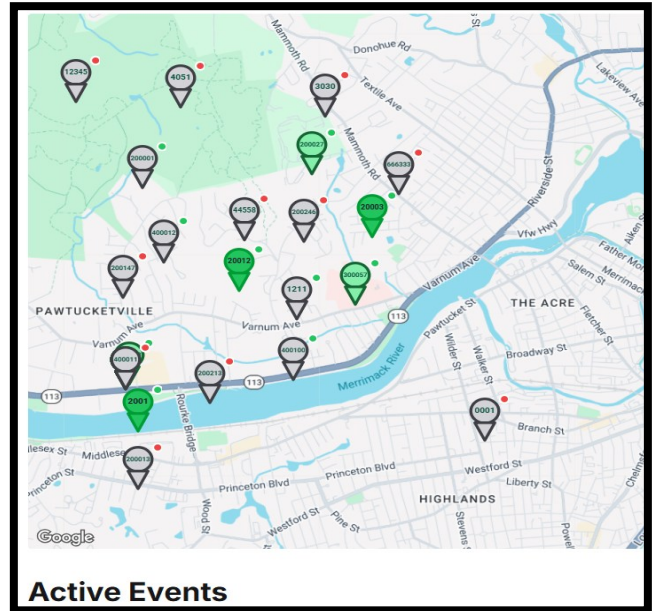


Kingfisher Intelligent Supervising Solution

Features:

- No NOC Fees
- Dual SIM, Wired Ethernet, Wi-Fi Communication
- Mass Notification
- Simplified Testing and Inspection Processes
- Your data is your data
- Transmission to any 3rd party CMS
- Works with any Fire Alarm Control Unit
- Machine to Machine (M2M) IOT communication
- Compatible on Windows, iOS and Android Platforms



Description:

KISS transforms Kingfisher's alarm infrastructure from a passive signaling system into an intelligent, data-driven monitoring platform - giving customers real-time visibility, predictive diagnostics, and compliance intelligence that currently replaces multiple vendors, manual processes, and central station dependencies which reduces operating costs.

The alarm communicator isn't just a dialer anymore - it's a data gateway. KISS platform turns every connected device into an intelligent endpoint that predicts failures, ensures reliability, and delivers risk intelligence in real time. KISS AI-powered architecture guarantees ultimate reliability for mission-critical operations.

Seconds matter. We communicate faster!

- End to end encryption
- Multi-path reliability
- Capture raw FACU serial data and device labels instantly
- Desktop or mobile app integration
- All the data delivered over multiple paths
- Zero NOC costs
- End Users can speak directly to their building(s). Stream live or pre-recorded audio announcements seamlessly providing MNS over voice evac & PA systems

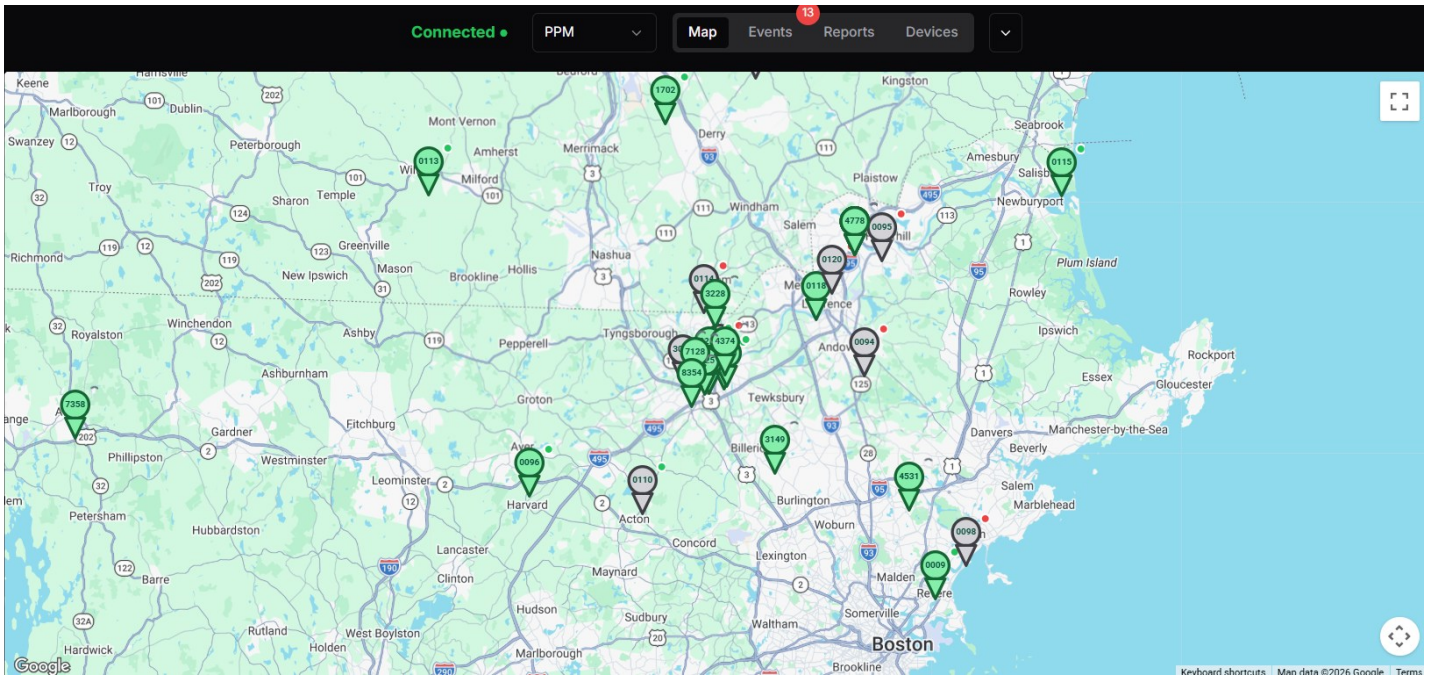
Kingfisher Intelligent Supervising Solution

Real-Time Event & Global Geospatial Monitoring

Cross-platform access: Native support for Web UI, iOS, and Android applications with live data synchronization.

Geospatial visualization: Dynamic map overlay rendering precise device coordinates via geographic location pins.

Color-coded telemetry: High-visibility, visual markers depicting real-time device operational status.



Box # ↑↓	Fn. ↑↓	Addr. ↑↓	Type ↑↓	Desc. ↑↓
4025	92	124 Stevens Street Lowell MA	Trouble	Return to Normal
0009	01	169 Squire Road Revere MA	Fire	Undefined
4025	02	124 Stevens Street Lowell MA	Fire	Fire
4025	92	124 Stevens Street Lowell MA	Trouble	Return to Normal
4025	02	124 Stevens Street Lowell MA	Fire	Fire
0009	02	169 Squire Road Revere MA	Fire	Undefined
0009	02	169 Squire Road Revere MA	Fire	Undefined
4025	92	124 Stevens Street Lowell MA	Trouble	Return to Normal
0009	72	169 Squire Road Revere MA	Trouble	Undefined
0009	01	169 Squire Road Revere MA	Fire	Undefined

Centralized Device Management & Administration

- **Hierarchical administration:** Comprehensive control across all IOT's
- **Real-time telemetry:** Instantaneous visibility into device status and cellular signal strength (RSSI)
- **Direct provisioning:** Over-the-air (OTA) device programming
- **Remote programming configuration & management**
- **Unified dashboard:** Holistic operational overview of the entire deployment

Status	Box Number	Address	Client Token	Signal Strength	
Online	0067	67 Spaulding Rd. Northfield NH	KFCL_BOXNUM_300048		
Online	7128	475-477 Varnum Ave Lowell MA	KFCL_BOXNUM_300022		
Online	7358	159 Park Street Athol MA	KFCL_BOXNUM_300087		
Online	8354	229 Stedman Street Lowell MA	UDAC_BOXNUM_200009		
Offline - Disconnected	0084	84 Chester Drive Chester NH	KFCL_BOXNUM_300046		
Online	0009	169 Squire Road Revere MA	KFCL_BOXNUM_300084		
Offline - Disconnected	0094	94 Flagship Drive North Andover MA	KFCL_BOXNUM_200011		
Offline - Disconnected	0095	62 Wingate Street Haverhill MA	KFCL_BOXNUM_300025		
Online	0096	12 Lancaster County Rd. Harvard MA	KFCL_BOXNUM_300011		
Online	0097	40 Church Street Lowell MA	KFCL_BOXNUM_200012		

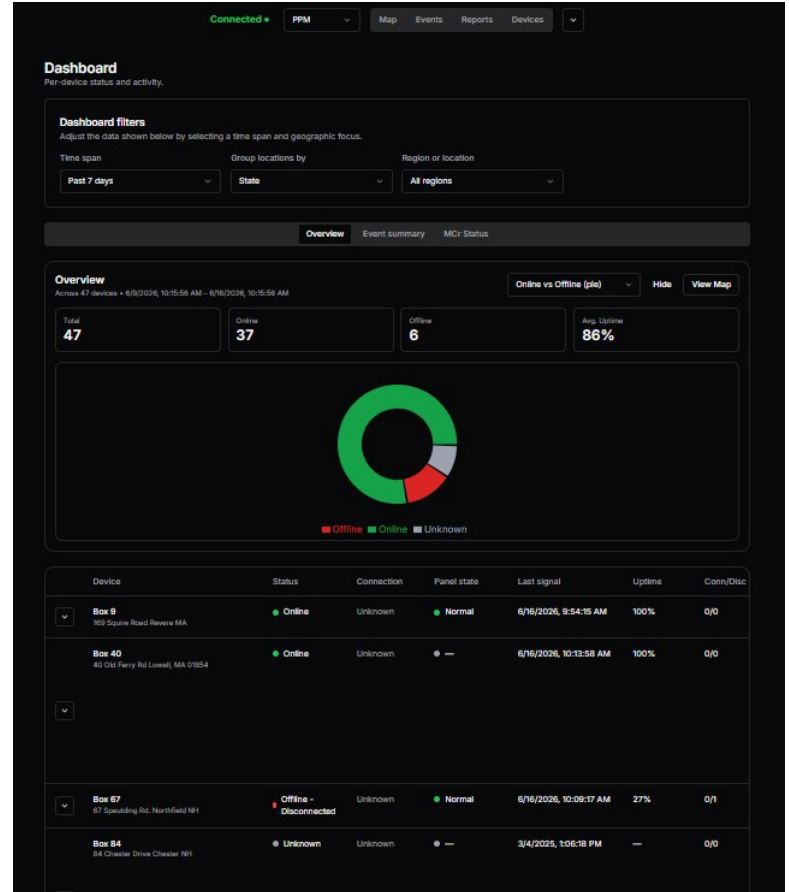
Advanced Reporting Engine

- **Granular filtering:** Filter by single or grouped IOT devices.
- **Event-driven queries:** Isolate data using customizable event categories.
- **Flexible temporal analysis:** Define custom date and time ranges.

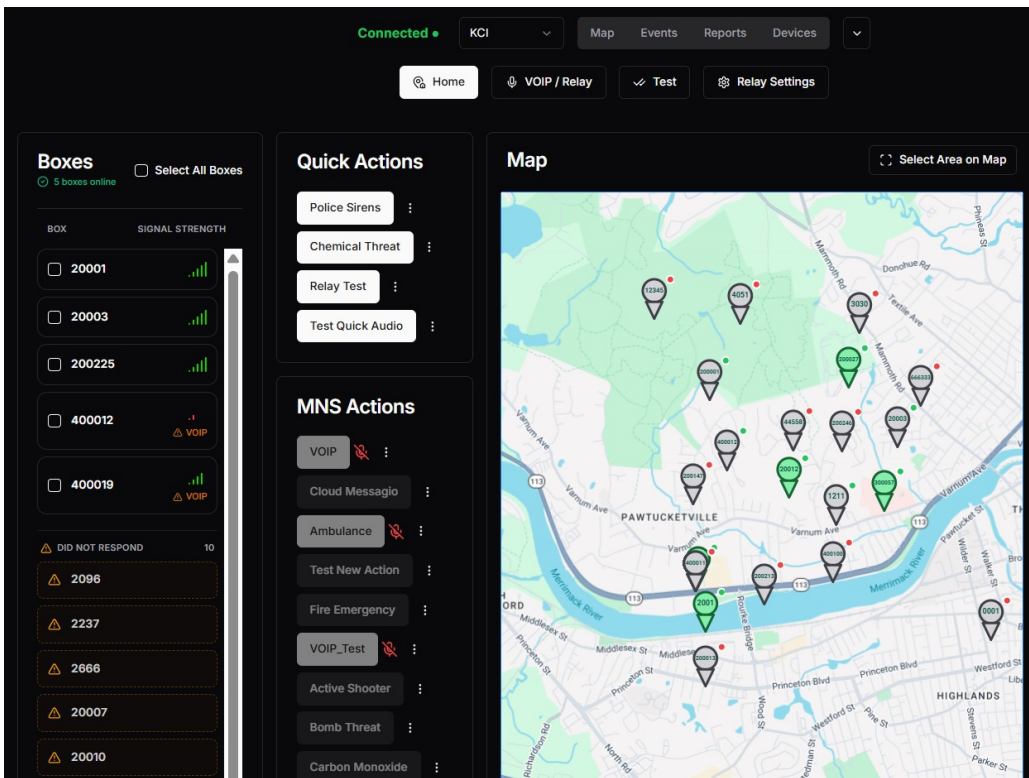
The screenshot displays the 'Reports' section of the KISS Platform. At the top, there are tabs for 'Standard Reports', 'Custom Report', 'IoT Events', and 'MCR Events'. Below these is a search bar and a list of event categories with checkboxes, including Fire, Test, Supervisory, Tamper, Security, Police, Medical, Hazmat, Alarm, Pre-Alarm, Water Flow, Trouble, and Auxiliary Trouble. At the bottom, there is a calendar view for June and July 2026, with the date '15' highlighted in the current month.

Real-Time Telemetry & Diagnostic Dashboard

- **Live status monitoring:** Immediate visibility into operational states of all connected endpoints
- **Signal metrics visualization:** Real-time tracking of IOT's online/offline status, average uptime



Centralized Mass Notification Console



- **Intuitive UI:** Simplified operator dashboard designed for rapid navigation and low-latency activation
- **Unified broadcast control:** Single-point interface to orchestrate and deploy system-wide mass notifications
- **Streamlined workflows:** Optimized, low-click event creation sequences to minimize human error during high-stress events